



ULTRASOUND SCANNERS AND ULTRASOUND EQUIPMENT

Performance And Adaptive Technologies

MEDICMAK



B1 PRO

Digital B/W Doppler Ultrasound System



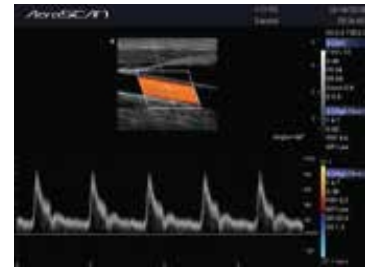
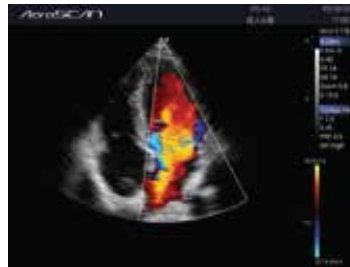
AeroSCAN
B1 PRO



- | 12 High Resolution LED Monitor with tilt facility of 30° degree
- | Standard 2 probe connectivity for ease of use.
- | Broadband Multi-frequency probes
- | Full digital Multi-beam forming technology.
- | SRA Speckle Reduction Algorithm.
- | Compound imaging
- | Trapezoid imaging.
- | i-Image (Intelligent image optimization)
- | Full screen display mode.
- | PW Doppler mode.
- | Automatic PW trace
- | Windows based system which support PC printer
- | Image management system : EasyView™

CD10 PRO

Digital Colour Doppler Ultrasound System



- | 15.6-inch LCD / LED medical grade monitor with high resolution and 180-degree open angle.
- | Efficient Workflow with the 10.1-inch sensitive touch screen.
- | Quick System Bootup
- | Extremely light weight at 4.5Kgs, realizes the true portability.
- | Digital Multi-Beam Forming Technology.
- | PIH (Pulse Inversion Harmonic Imaging).
- | eSRI (Speckle Reduction and Edge Enhancement Imaging).
- | eView (Spatial and Frequency Compound Imaging).
- | TAI (Tissue Adaptive Imaging).
- | eBoost (Echo Enhancement Technology).
- | eOptimized-One Key Optimization in B/Color/PW.
- | eTouch-Efficient Swipe gesture control.
- | PW Auto trace-Automatic measurement.
- | First of its kind, 'Android' Operating System



CD E-LITE

Excellent Diagnostic
Confidence
Excellent Productivity



AerOSCAN
CD E-LITE



14" touch screen with
20°adjustable tilt

21.5" HD LCD
medical monitor

Interactive back-lighting
control panel & Retractable
keyboard

Dedicated cable hook

Five transducers sockets

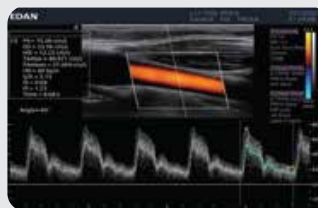
Detachable metal frame for
holding video printer and
DVD Drive

4 wheels with brakes

Control panel lift via
dedicated pedal: 20 cm

Wide Range of Applications

RADIOLOGY
CARDIOVASCULAR
OB/GYN





CD40

HD Color Doppler Ultrasound System

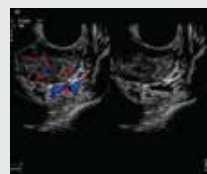


Cd40 is empowered by SonoScape's cutting-edge technology to provide high-definition images to vastly increase diagnostic confidence. The sophisticated features and rich probe configurations provide a comprehensive solution to manage all-aspects of the daily clinical practice with ease and certainty.

Super Wide-bandwidth Platform
Spatial Compound Imaging
u-Scan
Dynamic Color



EXCELLENT PERFORMANCE



CD50 PRO AI

An Intelligent Premium Ultrasound System

AerOSCAN
CD50 PRO AI






Cd50 PRO AI, powered by Wis+ platform, carries forward the premium performance in achieving multifaceted Evolution, Lucid imaging, Intelligent solution, Talented features, and Easeful experience. The unremitting research efforts on practical clinical needs boost the potential of ELITE to revolutionize the spectrum of patient care, with leading edge ultrasound technologies

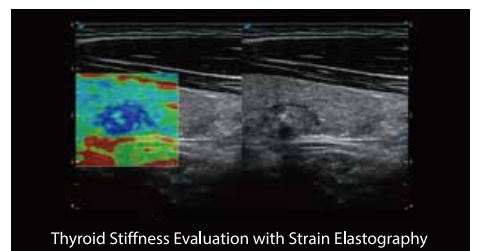
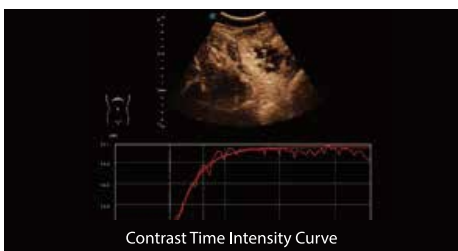
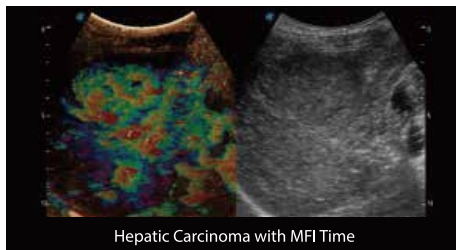


Wis+ Platform

An Intelligent Premium Ultrasound System

-  Single Crystal Convex and Cardiac Probes
-  Automated recognition and analysis
-  Unprecedentedly efficient

Clinical Image Gallery



CD25

Imaging your imagination

AeroSCAN
CD25

Full Digital Technology

Ultra-Compact System with Excellent Vision

AeroScan CD 25 is designed with latest technology, providing the more preferred compact yet powerful ultrasound platform for every day Imaging challenges. The system is designed incorporating outstanding 2D image quality and high color sensitivity, the CD25 provides the imaging performance needed to address the unique concerns of OB/Gyn, General Imaging, Cardiovascular, Small Parts Urology applications delivering confidence across every application. Loaded with a host of must-have, useful functions and suite of extended applications, the CD 25 is capable of providing superior endovaginal imaging and best-in-class fetal imaging for both 2D and 3D / 4D acquisition





For Sales & Service Contact

MEDICMAK

p: +91 90923 44846

e: info@medicmak.com

COIMBATORE, TAMILNADU.

www.medicmak.com